

ELEFANTE

Elefante IoT Platform

**U-NET** UNIVERSAL Network

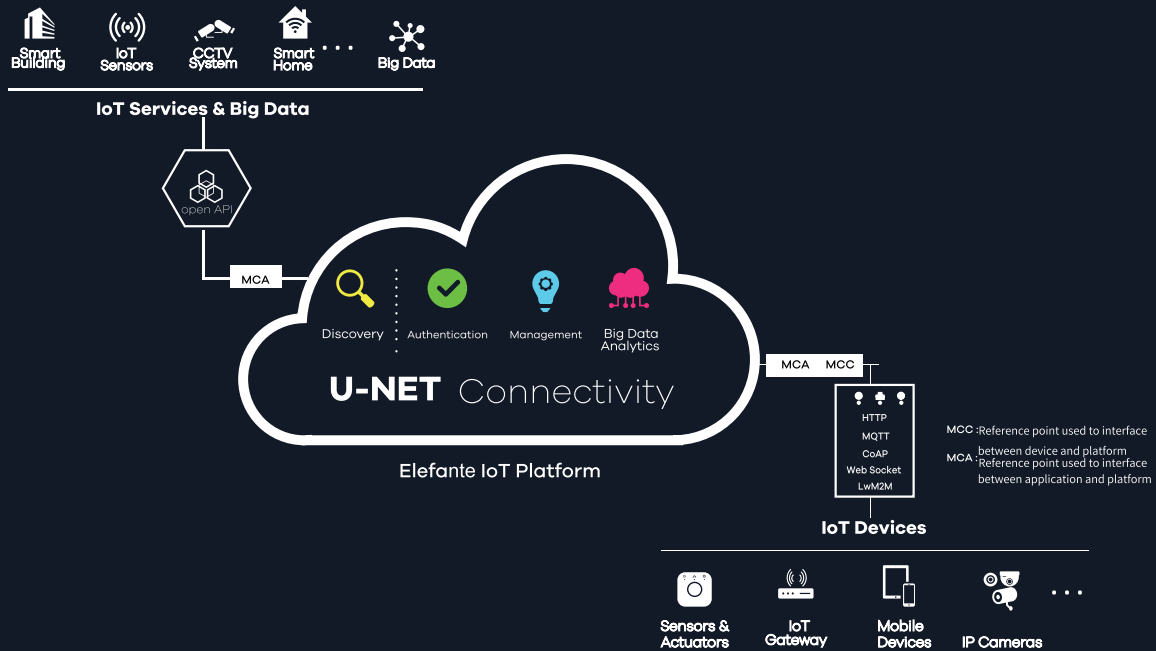
**CONNECTIVITY**

---

INNOVATIVE PLATFORMS FOR BUSINESS INTELLIGENCE

# Industry Standard IoT Platform

## U-NET Connectivity



## KEY FUNCTIONS

### Comprehensive Monitoring & Control

- Device registration, control, management, and monitoring.
- Application and container group management.
- Device location management and condition-based resource search.
- Real-time device data display in widget and graph.
- Sharing of data from services registered with platform

### Support for Stable Operation

- Extended API's for software and firmware upgrade.
- Service dashboard with widgets and portal.
- Prevention of data loss using database skip mode.
- Traffic control by blocking devices that cause abnormal traffic based on IP address.
- Rule-base event generation and push using data collected.

## USE CASES



### Smart City

Addressed energy shortage, traffic congestion, environmental pollution and public safety, smart parking, smart energy.



### Convergence of ICT and Industry 4.0

Converged ICT and shipbuilding and marine technology to increase the competitiveness of shipbuilding & marine industry and improve productivity.



### eIoT & Electricity Software Development Platform

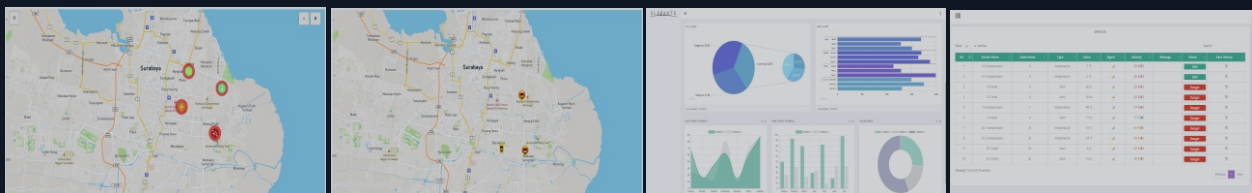
Implemented an open platform by replacing the existing closed power information System, Fostered new energy businesses with the ICT-based energy platform by securing Electricity infrastructure.



ELEFANTE

# U-NET UNIVERSAL Network

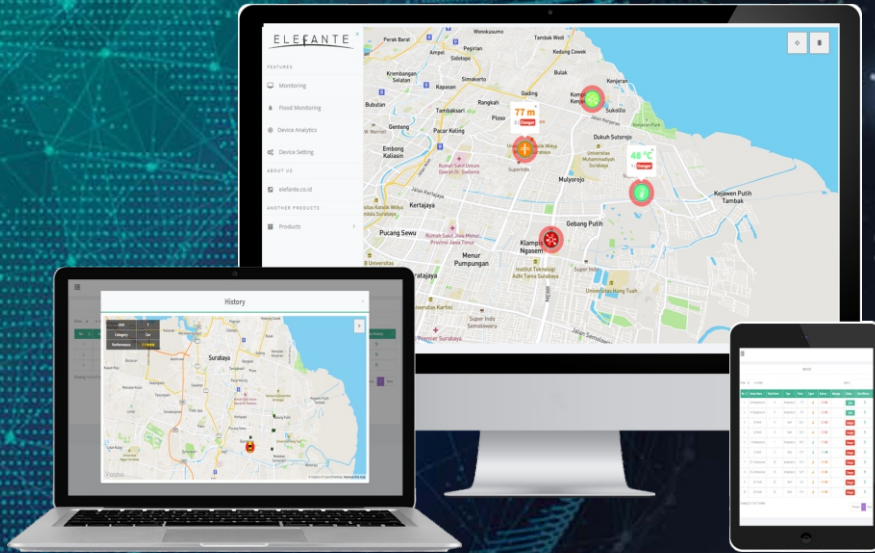
# DASHBOARD



INNOVATIVE DASHBOARD FOR BUSINESS INTELLIGENCE

# IoT Dashboard

Get Real-Time Data From Your Devices



## DESCRIPTION

Dashboard yang mendukung integrasi dengan berbagai jenis sensor, serta mendukung penggunaan berbagai macam protokol IoT (Internet of Things).

## KEY FUNCTIONS



### Real-time Data

Addressed energy shortage, traffic congestion, environmental pollution and public safety, smart parking, smart energy.



### Flood Monitoring

Addressed energy shortage, traffic congestion, environmental pollution and public safety, smart parking, smart energy.



### Data Analytic

Addressed energy shortage, traffic congestion, environmental pollution and public safety, smart parking, smart energy.



### Multiple Sensor

Addressed energy shortage, traffic congestion, environmental pollution and public safety, smart parking, smart energy.



### Interactive Chart

Addressed energy shortage, traffic congestion, environmental pollution and public safety, smart parking, smart energy.